

Required Scale

Flute

$\text{♩} = 108$

3

Required Scale

Oboe



Required Scale

Clarinet in B \flat



Bassoon

Required Scale

♩ = 108



Horn in F

Required Scale



Required Scale

Trumpet in B \flat



Trombone

Required Scale



Required Scale

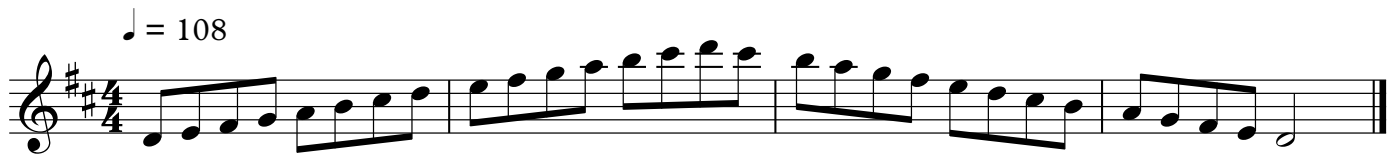
Tuba

♩ = 108



Required Scale

Violin I



Required Scale

Viola

♩ = 108

The musical notation shows a single staff in bass clef with a key signature of one sharp (F#) and a time signature of 4/4. The tempo is marked as ♩ = 108. The scale is written in a single line, starting on G4 and ending on E3. The notes are: G4, A4, B4, C5, B4, A4, G4, F4, E4, D4, C4, B3, A3, G3, F3, E3.

Violoncello

Required Scale

♩ = 108

The musical notation shows a single staff in bass clef with a key signature of one sharp (F#) and a 4/4 time signature. The tempo marking is ♩ = 108. The scale is written in four measures: the first measure contains the ascending scale C4-D4-E4-F4-G4-A4-B4-C5; the second measure contains the descending scale C5-B4-A4-G4-F4-E4-D4; the third measure contains the descending scale C4-B3-A3-G3-F3-E3-D3; and the fourth measure contains the descending scale C3-B2-A2-G2-F2-E2-D2. The piece ends with a double bar line.

Double Bass

Required Scale

♩ = 108

The musical notation shows a single staff in bass clef with a key signature of one sharp (F#) and a 4/4 time signature. The tempo is marked as ♩ = 108. The scale begins on G2 (two ledger lines below the staff) and proceeds through the notes: G2, F#2, E2, D2, C2, B1, A1, G1, F#1, E1, D1, C1, B0, A0, G0, F#0, E0, D0, C0, B-1, A-1, G-1, F#-1, E-1, D-1, C-1, B-2, A-2, G-2, F#-2, E-2, D-2, C-2, B-3, A-3, G-3. The scale concludes with a final G-3 note followed by a double bar line.